

HEMI-SECTIONING- THE LAST HOPE BEFORE DENTAL IMPLANT

Mustafa T. Mohamadamin, Tishk International University, Dept. of Endodontics



Mustafa T. Mohamadamin, Tishk International University, Dept. of Endodontics

AIM

To save a multi rooted tooth when one of the roots is compromised and the patient wants to save the tooth and refuses dental implants.

INTRODUCTION

Sectioning the compromised root in a multirooted tooth in order to save the tooth and give the last hope before dental implants is always an option to be offered for patients and can be considered as a treatment strategy in saving those so-called hopeless teeth.

CASE PRESENTATION:

A 33 years old lady having desire to fix all her dental issues, from her mandibular right side, since tooth number 47 was extracted the patient didn't want to extract the compromised 46 as well.

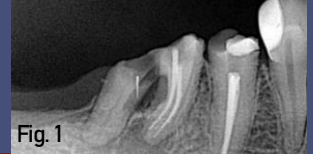


Fig. 1



Fig. 2



Fig. 3



Fig. 4

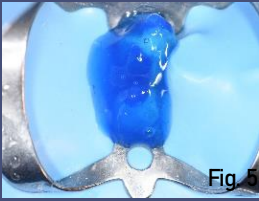


Fig. 5



Fig. 6



Fig. 7



Fig. 8

Pre operative radiograph and clinical examination showing compromised distal root of tooth no. 46. (fig. 1 & 2). Sectioning of the distal root decided with retreatment of the mesial roots (fig. 3 & 4). Restoration of the tooth was done with resin composite in the same visit (fig. 5, 6 & 7). The root was prepared with the adjacent tooth number 45 with vertical approach and waited for two weeks for the soft tissue to be healed and the impression was taken (fig. 8 & 9). Two separate monolithic zirconia crowns were covered and cemented over the prepared roots with glass ionomer cement (fig.10 & 11). 3 months follow up radiograph shows some healing of alveolar bone adjacent and surroundings of the root with stable and functional crown (fig.12).



Fig. 9



Fig. 10



Fig. 11



Fig. 12

DISCUSSION

Hemi-sectioning was the treatment strategies that have been implemented in order to save the tooth, and the tooth is functioning and showing healing signs on x-ray. Further follow-ups are scheduled for the future.

CONCLUSION & CLINICAL RELEVANCE

Nowadays despite the popularity of dental implants, hemi-sectioning of multirooted tooth can often be the choice and giving the tooth a hope before extracting and placing implants.

REFERENCES

World J Dent 2013;4(3):180-187. , J Prosthet Dent 1989;61:648-652